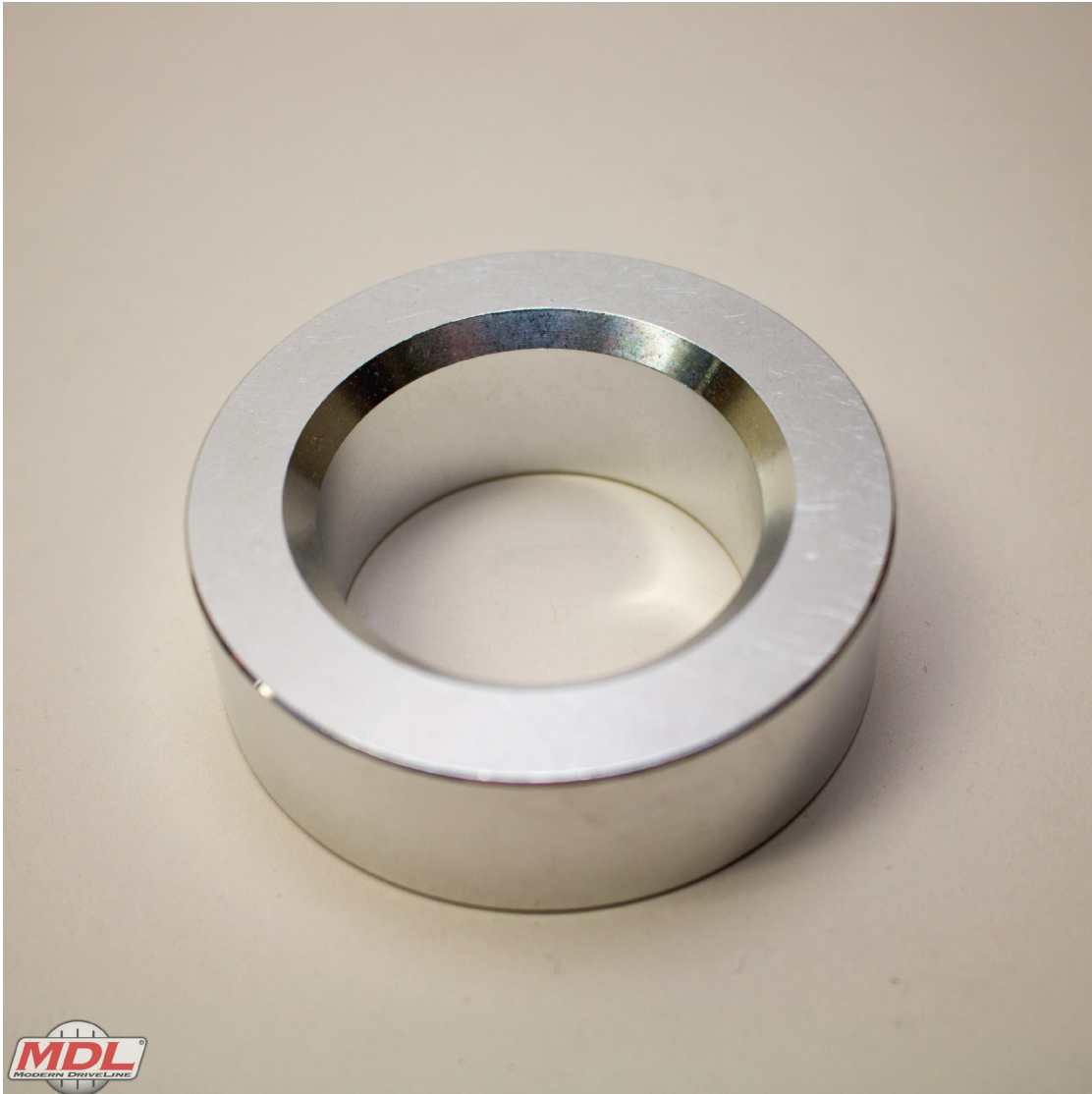


# Using the 1440/1441 Spacer



When required, The above spacer is used to support the threaded bearing collar of a hydraulic release bearing, moving the bearing towards the engine, providing more adjustment and thread engagement of the bearing collar. The bearing collar must have 3 full treads of engagement. When the collar is provided for use with a T-56 or Magnum Tremec transmission the collar **MUST BE USED**.

Instructions: Install the MD-514-1440 Spacer on the guide tube of the transmission with the bevel (shown) towards the transmission. The flat side will be used to support the bearing collar.